



Westbourne Terrace, W2 | Asking Price £575,000



TUCKERMAN
ESTATE AGENTS
PROPERTY PROFESSIONALS

Westbourne Terrace, London

A beautiful one bedroom apartment situated on this desirable stucco fronted block on Westbourne Terrace.

DESCRIPTION

Situated on the third floor (lift), this beautiful one bedroom flat extends just under 500 square feet and comprises a bright and spacious open-plan living room with semi-integrated contemporary kitchen, large double bedroom with integrated wardrobes and a modern bathroom suite. The property is presented in good order throughout and would make the ideal pied-a-terre, first time purchase or rental investment. EPC Rating - C.

LOCATION

Westbourne Terrace is located between Paddington and Bayswater, with the shops and restaurants of Queensway and Westbourne Grove nearby as well as the open spaces of Hyde Park. Transport links include Paddington Mainline and underground stations (Bakerloo, Circle & District, Elizabeth Line, Hammersmith & City) and Lancaster Gate (Central Line) underground station.

TENURE

Share of Freehold + 977 year lease

CHARGES

Service Charge - £4,088.20 p.a.

Ground Rent - Peppercorn





Westbourne Terrace, London

Asking Price:
£575,000 subject to contract.


Tenure:
Share of Freehold

Local Authority:
Westminster City Council

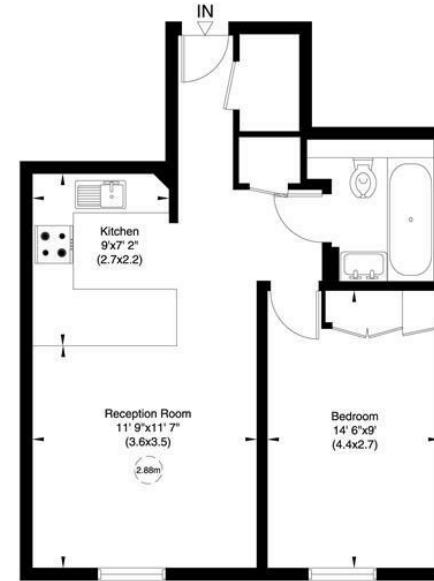
Council Tax Band:
D

Approximate Gross Internal Area:
494.00 sq ft

Energy Efficiency Rating

	Current	Potential
<i>Very energy efficient - lower running costs</i>		
(92 plus) A		
(81-91) B		
(69-80) C	77	82
(55-68) D		
(39-54) E		
(21-38) F		
(1-20) G		
<i>Not energy efficient - higher running costs</i>		
England & Wales	EU Directive 2002/91/EC	

Westbourne Terrace, W2
Approximate Gross Internal Area
46 sq m/ 494 sq ft
Not to Scale, for identification only



Third Floor

For guidance only and must not be relied upon as a statement of fact.
All measurements and areas are approximate only (and have been prepared in accordance with the current edition of the RICS Code of Measuring Practice).



020 7222 5510

info@tuckermanresidential.co.uk
52 Moreton Street, London, SW1PV 2PB
www.tuckermanresidential.co.uk

Agents Note: Whilst every care has been taken to prepare these sales particulars, they are for guidance purposes only. All measurements are approximate and are for general guidance purposes only and whilst every care has been taken to ensure their accuracy, they should not be relied upon and potential buyers are advised to recheck the measurements

TUCKERMAN
ESTATE AGENTS
PROPERTY PROFESSIONALS